

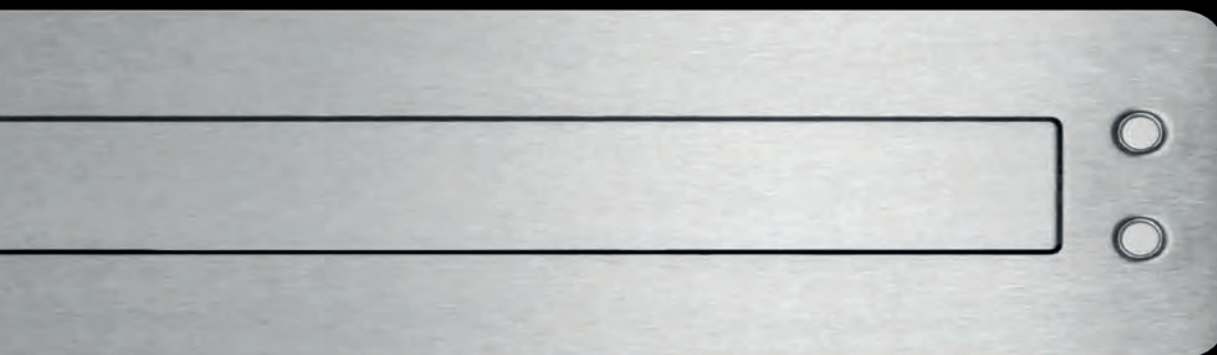
FEATURES

ELEMENT ONE is second to none. We're proud of the skills, the experience and the creativity of our team and our partners.

Quality and usability is the opposite of coincidence. You can feel and touch this everytime you're using an ELEMENT ONE product.

On the following pages we invite you to discover the unique built-in features of integrated solutions Made by ELEMENT ONE - Made in Germany.

Discover the invisible!



discover|the|invisible

Autorisierter Partner

MEDIA  MOTION

Amsinckstraße 70
20097 Hamburg
Fon +49 40 / 22 62 111 - 60
Fax +49 40 / 22 62 111 - 70
info@media-in-motion.com

Ihre Spezialisten für Medientechnik !
www.media-in-motion.com

Installation from below

Discover the Invisible! With the "undermount" installation feature all what's left when the monitor retracted whisper-silent into the table ... is a little gap.

The surface of the rear panel or of the closure flap can be laminated with wood or with a coating in order to make it match perfectly to your design demands.

Supplied with special brackets the installation is most comfortable and considers the demands of the table manufacturer.



Autorisierter Partner

MEDIA IN MOTION

Amsinckstraße 70
20097 Hamburg
Fon +49 40 / 22 62 111 - 60
Fax +49 40 / 22 62 111 - 70
info@media-in-motion.com

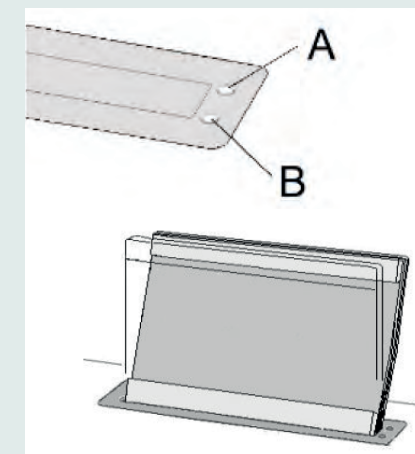
INSTALLATION FROM BELOW

Tilt Presetting

For a comfortable use the inclination of your ELEMENT ONE Monitor can be pre-adjusted individually - on-site.

Push and hold down both control buttons simultaneously until the fifth beep and while Monitor is in retracted position. The Monitor rises up to the current end position. Now you're able to adjust the preferred inclination and you finish it by saving the preset via pushing both buttons again.

Easy and in the scope of supply!



Autorisierter Partner

MEDIA IN MOTION

Amsinckstraße 70
20097 Hamburg
Fon +49 40 / 22 62 111 - 60
Fax +49 40 / 22 62 111 - 70
info@media-in-motion.com

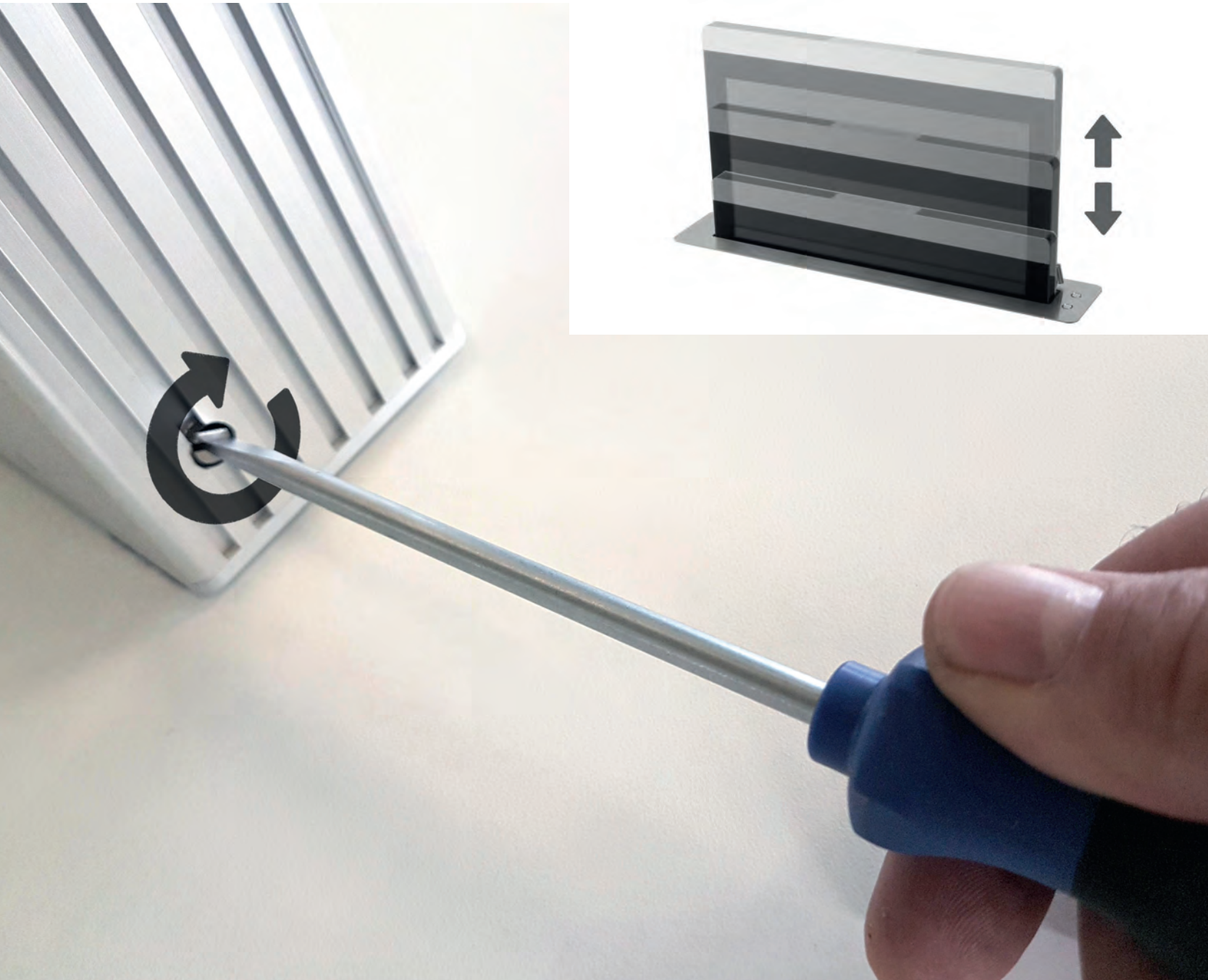
TILT PRESETTING

Direct-Axle-Access (DAA)

Each monitor of the CONVERS series is equipped with the unique "Direct-Axle-Access", a useful feature for installation and maintenance.

This allows you to manually raise and lower the monitor without electrical power.

All what you need is a screwdriver or portable electric drill.



Direct-Axle-Access

Autorisierter Partner

MEDIA IN MOTION

Amsinckstraße 70
20097 Hamburg
Fon +49 40 / 22 62 111 - 60
Fax +49 40 / 22 62 111 - 70
info@media-in-motion.com

TCP/IP Remote Control

Easy access and remote control is in the scope of supply of almost every Premium Motorized Monitor by ELEMENT ONE (FLEX & BLADE series)

Your **advantage**: No additional and/or proprietary System has to be installed, no additional investment and no hidden costs to make an ELEMENT ONE a logical component of your room automation system. The Monitor is communicating with this set of commands (Function):

<i>move up</i>	Unit opens
<i>move down</i>	Unit closes
<i>display on</i>	Switches display on
<i>display off</i>	Switches display off
<i>stop</i>	Stops monitor movement
<i>status</i>	Requests information on current position of display
<i>devicedetails</i>	Requests information on type of unit
<i>protocol</i>	Requests information on Ethernet protocol version
<i>check</i>	To check whether connection to unit is working
<i>lock on</i>	Blocks control of the unit with the push button temporarily
<i>lock off</i>	Cancels temporary blocking of push button control
<i>lock perm on</i>	Blocks control of the unit with the push button permanently
<i>lock perm off</i>	Cancels permanent blocking of push button control

Autorisierter Partner

MEDIA IN MOTION

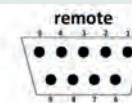
Amsinckstraße 70
20097 Hamburg
Fon +49 40 / 22 62 111 - 60
Fax +49 40 / 22 62 111 - 70
info@media-in-motion.com

TCP/IP Remote Control

Dry Contact Remote Control

The easiest way to control an installed motorized Monitor is a wire. Connect the 9-pin-dSub with a dry contact - and here we go.

1-2 = up
3-4 = down
5 = out 12 V/0,1 A max.
9 = GND



Operation*:

To raise, connect pin 1 to pin 2

To retract, connect pin 3 to pin 4

(* Do not apply external voltage! Pins may not be bridged!
Current pulse for switching = approx. 15 mA at 12 V DC)

Update Feature via dSub-interface

The firmware of the E1 monitor systems can be updated via the 9-Pin-dSub interface, too. To proceed a firmware update, the monitor system must be connected via an adapter cable to a specially configured PC/laptop. The firmware update requires:

- a special Configurator Software (E1 product),
 - a special USB adapter cable (E1 product),
 - an appropriately configured PC/laptop
- Please, contact us for further information

Autorisierter Partner

MEDIA IN MOTION

Amsinckstraße 70
20097 Hamburg
Fon +49 40 / 22 62 111 - 60
Fax +49 40 / 22 62 111 - 70
info@media-in-motion.com

Dry Contact Remote Control

B-Mount System (for BLADE Monitors)

All BLADE monitors are equipped with a B-mount to attach the monitor to various ELEMENT ONE holders for a variety of applications.

Each BLADE monitor has standardized trays on the bottom of the housing into which the respective brackets can be easily clicked in and secured if necessary: Plug & Play.

These mounts are available for the following purposes:

- Fixed installation on table
- Flexible installation table
-with cover flap
- Desktop Monitor
- wall mounting

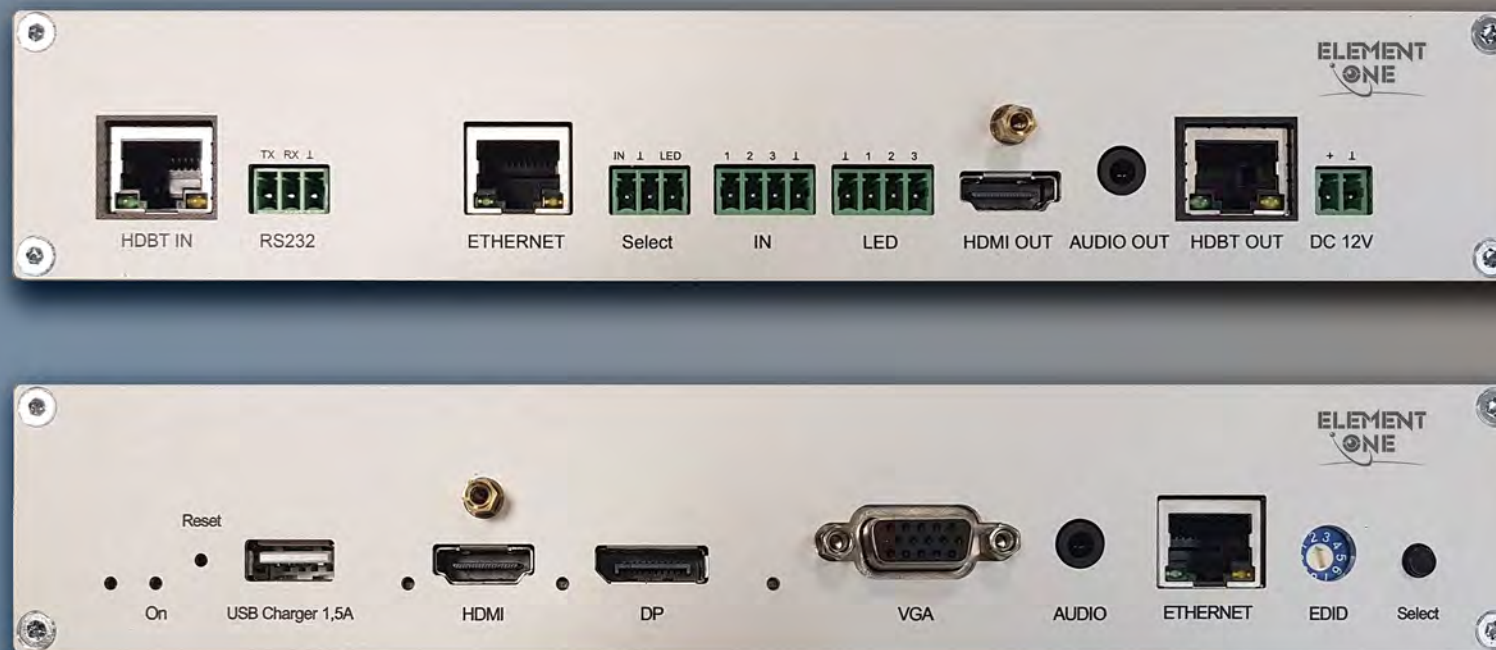
And we are pleased to supply your individual B-mount version for your individual installation purpose.

Autorisierter Partner

MEDIA IN MOTION

Amsinckstraße 70
20097 Hamburg
Fon +49 40 / 22 62 111 - 60
Fax +49 40 / 22 62 111 - 70
info@media-in-motion.com

B-Mount System



ELEMENT ONE Daisy Join & Loop is a presentation system for HDMI, Display-port and VGA/A signals.

Up to 96 different signal sources can be forwarded to a playback device or to all Daisy Join & Loop devices in a system by simply pressing a button or detecting a signal. Depending on the state of the incoming signal, the signals are automatically restored to the prescribed standard at the signal inputs.

At the output of the Daisy Join & Loop system, the signals can be transmitted up to 100 meters of cable directly to a playback device via a CAT cable or HDMI cable. Projector, display and so on. be transmitted. The Daisy Join & Loop automatically manages all the required communication and video signals from the source to a playback device and, if required, embeds or de-embeds audio signals.

The system module is installed in an aluminum housing 1U.

Autorisierter Partner

MEDIA IN MOTION

Amsinckstraße 70
20097 Hamburg
Fon +49 40 / 22 62 111 - 60
Fax +49 40 / 22 62 111 - 70
info@media-in-motion.com

DAISY JOIN & LOOP



Multi-Touch Screen

To make your ELEMENT ONE monitor interactive almost every model can be upgraded with a touch overlay. We offer only high-precision **PCAP** (Projected Capacitive) **multi-touch** technologies for this purpose.

Our touchscreens allow you the most accurate touch input. We combine the PCAP touch overlay perfectly with the original glass and thus obtain a much more **robust** and visually unadulterated surface than with resistive technologies. Our touchscreens are impervious to moisture, dust, scratches and grease and recognize the finest movement of your finger.

Your advantage: Precise multi-touch input with the same **brilliant** image and **durable** surface, that is: you get the most suitable monitor for your project in an optical and tactile way. High resolution, quick response, high-quality appearance. And it is optically indistinguishable from the „normal“ variant.

Autorisierter Partner

MEDIA IN MOTION

Amsinckstraße 70
20097 Hamburg
Fon +49 40 / 22 62 111 - 60
Fax +49 40 / 22 62 111 - 70
info@media-in-motion.com

Multi-Touch Screen



CONVERS ONE
125 | 156 | 173 | 201 | 220 | 240 | 240 | 240-4K



CONVERS FLEX
173 | 220



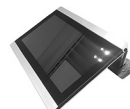
CONVERS BLADE
125 | 156-4K | 173



CONVERS DOUBLE
173 | 220



CONVERS TWIN
125



CONVERS FOLD
173 | 220



CONMIC
40 | 50



TURNIS
173 | 220



MODIS FLEX
173 | 220



MODIS FLEX BASIC
173 | 220



VERSIS VESA



premium | retractable | monitor | solutions



TECNIS inWall | inTable
156 | 173 | 220



CONVERS MIC CONFERENCE
CONVERS CONMIC CONFERENCE
125 | 156 | 173 | 220



CONVERS CONFERENCE
125 | 156 | 173 | 220



VERSIS FLEX
156 | 173 | 220



VERSIS FLEX BASIC
156 | 173 | 220



VERSIS FLEX / 75
156 | 173 | 220



TECNIS inWall | inTable
156 | 173 | 220



TECNIS TWIN TABLE
156 | 173 | 220



TECNIS TABLE
156 | 173 | 220



CONVERS SINGLE MIC
CONVERS SINGLE CONMIC
156 | 156 | 173 | 220



CONVERS DUAL MIC
CONVERS DUAL CONMIC
156 | 156 | 173 | 220



CONVIS
125



BLADE TABLE
125



BLADE CONFERENCE
125



BLADE inWall | inTable
125



BLADE FOLD
125 | 173



DASIV LOOP
DAISY JOIN



ROTATIS
173 | 220



SPEAKSIS ONE



CONVERS 300+